



Product Brochure

# PREDATOR STAINLESS STEEL



Outstanding Visibility under the Starlight





## Product Brochure

# PREDATOR STAINLESS STEEL



DESIGNED AND  
MANUFACTURED  
IN THE UK



Analogue 4:3  
(HD Quality)



From this



Full HD 1080p



To this

## Predator Hybrid

Analogue & HD in ONE  
PTZ Camera.

No additional equipment required.

Introducing the Patent Pending Predator Hybrid Dual output  
HD AND Analogue PTZ Camera Range.

## Future Proofing CCTV Surveillance Systems

360 Vision are proud to launch the World's first Simultaneous Dual Output Analogue and High Definition Range of PTZ cameras.

Offering Simultaneous true 4:3 High Resolution Analogue video (delivered via conventional coaxial cable) AND 16:9 High Definition IP Video, Predator Stainless Steel provides a "HD Ready" experience for all existing analogue systems and delivering an extremely cost effective return on investment for the future.

Using Predator Stainless Steel, the customer gains the ability to install what appears to be a conventional analogue camera, with a familiar video over coax cable and RS485 Telemetry data over twisted pair (or coax!).

Within the Predator Stainless Steel sits a Full HD 1080p 30x autofocus camera that provides near HD video over conventional analogue coax cable when in Analogue mode.

Existing analogue control systems, such as video matrices and Digital Video Recorders (DVRs) are still able to take analogue control and video from Predator Stainless Steel - even using 3rd party protocols such as Pelco, VCL, Forward Vision, Ultrak, Mark Mercer and more.

Simultaneously, Predator Stainless Steel can also offer conventional ethernet connectivity out via CAT6 ethernet cable to offer streaming via IP protocols. Including ONVIF and 360's own proprietary SDK - thus allowing current or future connection to ALL of the industry's leading VMS solutions such as IndigoVision, Exacq, Milestone, Genetec, Avigilon and ANY ONVIF approved VMS.



## Product Brochure

# PREDATOR STAINLESS STEEL



DESIGNED AND  
MANUFACTURED  
IN THE UK



ONVIF



## STAINLESS STEEL Hybrid Dual output HD AND Analogue PTZ Camera Range.

### UK Manufacture

Designed and Manufactured in the UK.

### Paint Colour Options

Any colour, any quantity.

### Attack Detect Feature

Predators will automatically return to their original position if physically moved/attacked.

### Protocols

ONVIF 'S' complaint or 360SDK, see our web site for the many compatible VMS systems.

### Analogue Protocols

360 (RS485/Coax), Pelco (RS485/Coax), VCL (RS485/Coax), Forward Vision and Ultrak (RS485)

### Extreme Low Light cameras

Extreme low light cameras with mono video images as low as 0.0008 lux [no illumination]

### IP68 Certification

IP68 certified for the harshest environments.

### Stainless Steel

316 stainless steel.

### Warranty

3 year warranty

### Privacy Zones

24 privacy zones are available with simple joystick positioning and sizing.

### Predator Hybrid: Patent Pending

Option giving ANALOGUE and 1080p HD output/control, for system migration to full HD.

### Built in EDGE recording option - 128 or 256Gb Storage on board

Continuous/FTP Upload/Network Loss/Alarm Scheduled recording option to On Board Storage.







## Product Brochure

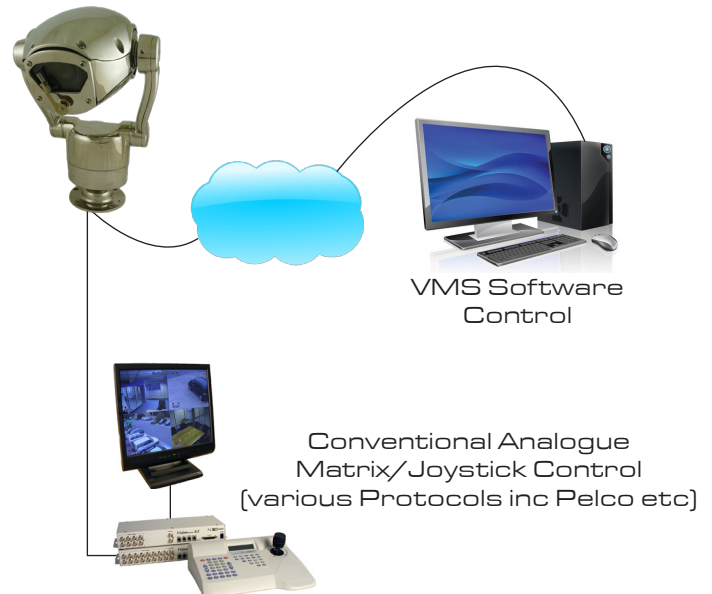
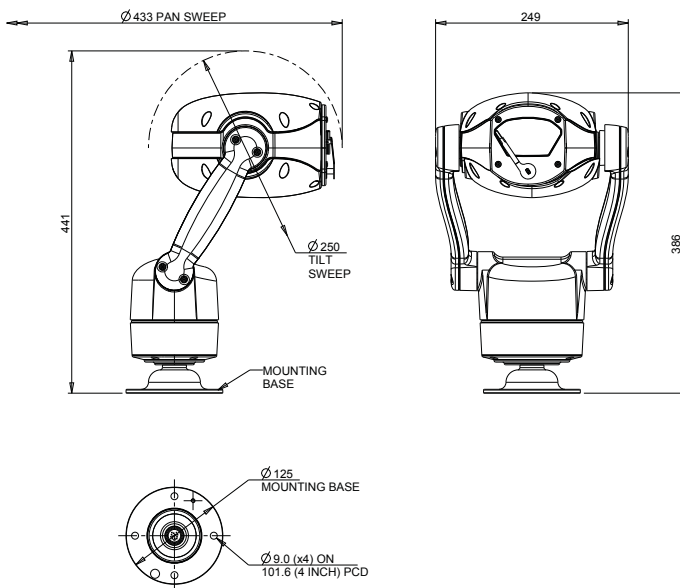
# PREDATOR STAINLESS STEEL



DESIGNED AND  
MANUFACTURED  
IN THE UK



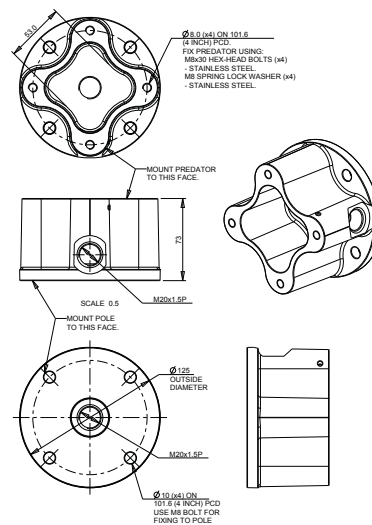
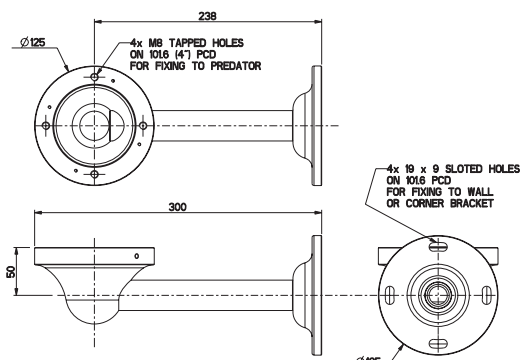
Predator with no lamps  
Weight: 14kg




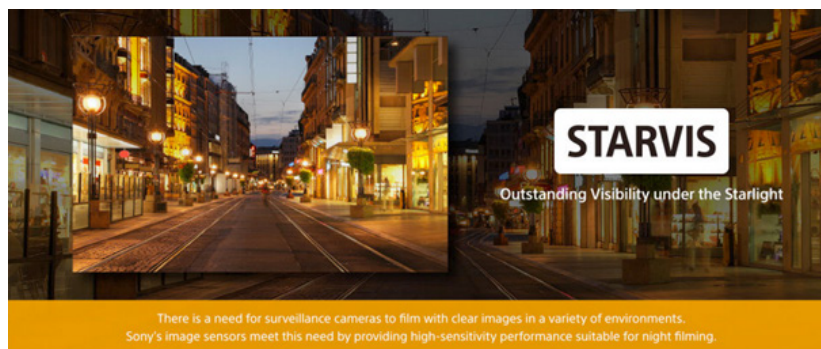
## PREDATOR Bracketry

Wall Bracket  
Weight: 3kg

Pole Mount Adapter (PMA)  
Weight: 3.6kg



PRODUCT SPECIFICATION	30x 		
Colour/Mono	Yes		
Imager (CMOS)	1/2.8-type Exmor R		
Zoom - Optical + Digital	30x, 12x		
Zoom - Total	360x		
Pixels	Approx 2.13 Megapixels		
Horizontal view angle	2.3°(T) - 63.7°(W)		
Lens Size	4.3 - 129mm		
Min Sensitivity - colour	0.0013 Lux		
Min Sensitivity - mono Int	0.0008 Lux		
Signal Noise Ratio	>50dB		
Picture Freeze	Yes		
Picture Flip	Yes		
PRODUCT FEATURES	ALL PREDATOR units have the following functions		
Focus/Iris	Auto/Manual		
Presets	360		
Tours	4 (max 90 presets per tour)		
Learned Patrols	4 mimic tours - up to 30 minutes duration each		
Privacy Zones	Up to 24		
Variable pan speed/coverage	0.1 - 120°/sec, 360° continuous rotation, absolute positioning		
Variable tilt speed/coverage	0.1 - 120°/sec, 180°, absolute positioning		
Auto Homing	Goes to preset, tour or mimic tour after prescribed time		
Col/Mono Changeover	4 levels - 3 fixed, 1 custom/user defined		
Operating temperature	-50°C to +60°C with optional heater		
Power	24vac 160VA		
Mounting options	Wall, Corner, Pole and Soffit		
Certification	CE & FCC approval; Ingress IP68; Impact IK10; Vibration & Shock certified approvals		
WEIGHTS			
Predator Steel (No lamps)	14kg		
CODEC	25fps	ASPECT	30fps
HD1080p	1920x1080	16:9	1920x1080
HD720p	1280x720	16:9	1280x720
D1	720x576	4:3	720x480
VGA	640x480	4:3	640x480
QVGA	432x240	16:9	432x240
Distribution	Multi Codec 2 streams		
Image Compression	H.264, MPEG4, MJPEG		
Protocols	ONVIF (S), TCP/IP, HTTP, RTP, RTSP, 360SDK		
Compression levels	CBR, VBR CVBR		



All trademarks are used courtesy of registered owners. PREDATOR STAINLESS STEEL is a registered trademark of 360 Vision Technology Ltd.  
The manufacturer reserves the right to change specifications without notice.



### 360 Vision Technology Ltd

Unit 7 Seymour Court Manor Park Runcorn Cheshire WA7 1SY UK  
Tel: +44 (0)870 903 3601 Fax: +44 (0)870 903 3602  
info@360visiontechnology.com  
[www.360visiontechnology.com](http://www.360visiontechnology.com)





**360VISION**  
TECHNOLOGY