



Product Brochure

PREDATOR



Dual lamp unit shown (covers IR160SW and IR225 products), other colours available.



Product Data Sheet

PREDATOR



High Speed High Definition Ruggedised Pan, Tilt and Zoom Camera

UK Manufacture

Designed and manufactured in the UK

Warranty

3 year's FULL warranty

Innovative Night Vision

Patent Pending Dual IR & White Light for COLOUR at NIGHT

IP68 Certification

IP68 certified for the harshest of environments

Multi-Protocol Integration

The PREDATOR range comes with multi-protocols as standard allowing complete integration with many leading DVRs, Matrices and IP systems

OSD

PREDATOR's OSD enables full access to all functions using either 3rd party protocols or 360 Vision Technology's control systems

Quality Standard

Excellence in design and manufacture ensure all 360 Vision products offer exceptional quality combined with ultra reliability

Privacy Zones

24 privacy zones are available with simple joystick positioning and sizing

Extreme Low Light Capability

Frame integration cameras give usable video images as low as 0.01 lux

Colour/Mono Cameras

The PREDATOR range includes 18x, 28x, or 44x zoom with autofocus featuring Sony ExView, Wide Dynamic Range (WDR) camera technology which gives excellent low light performance. 360 Vision software enables the colour/mono switch over levels to specific lighting conditions





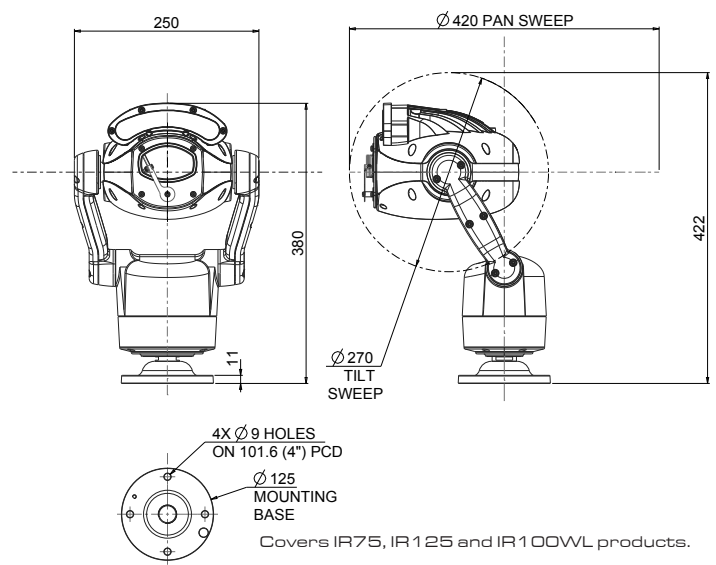
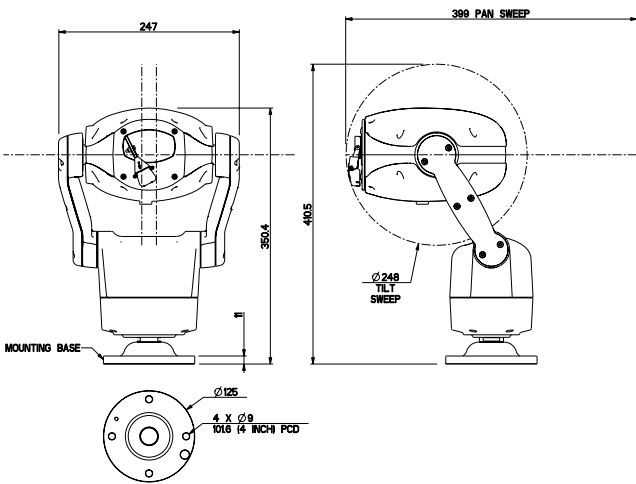
Product Data Sheet

PREDATOR



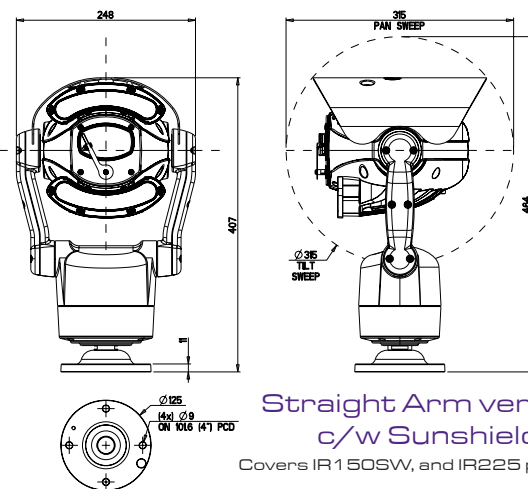
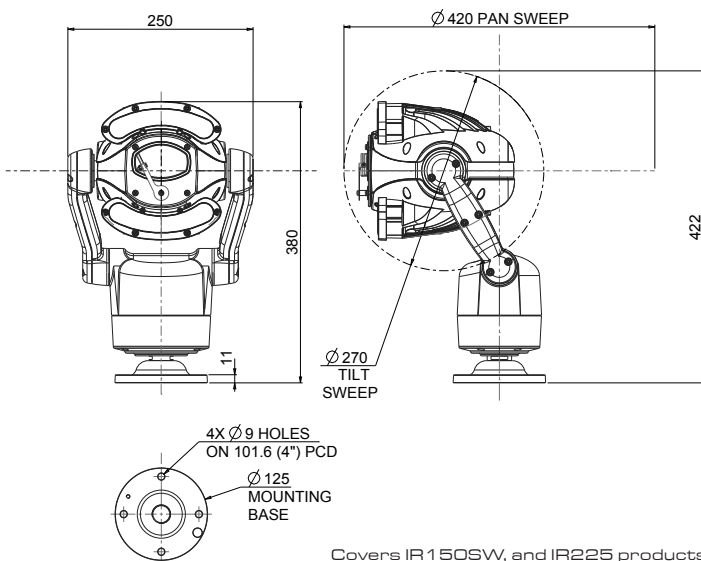
Predator with no lamps
Weight: 7.5kg

Predator with single lamp
Weight: 8kg



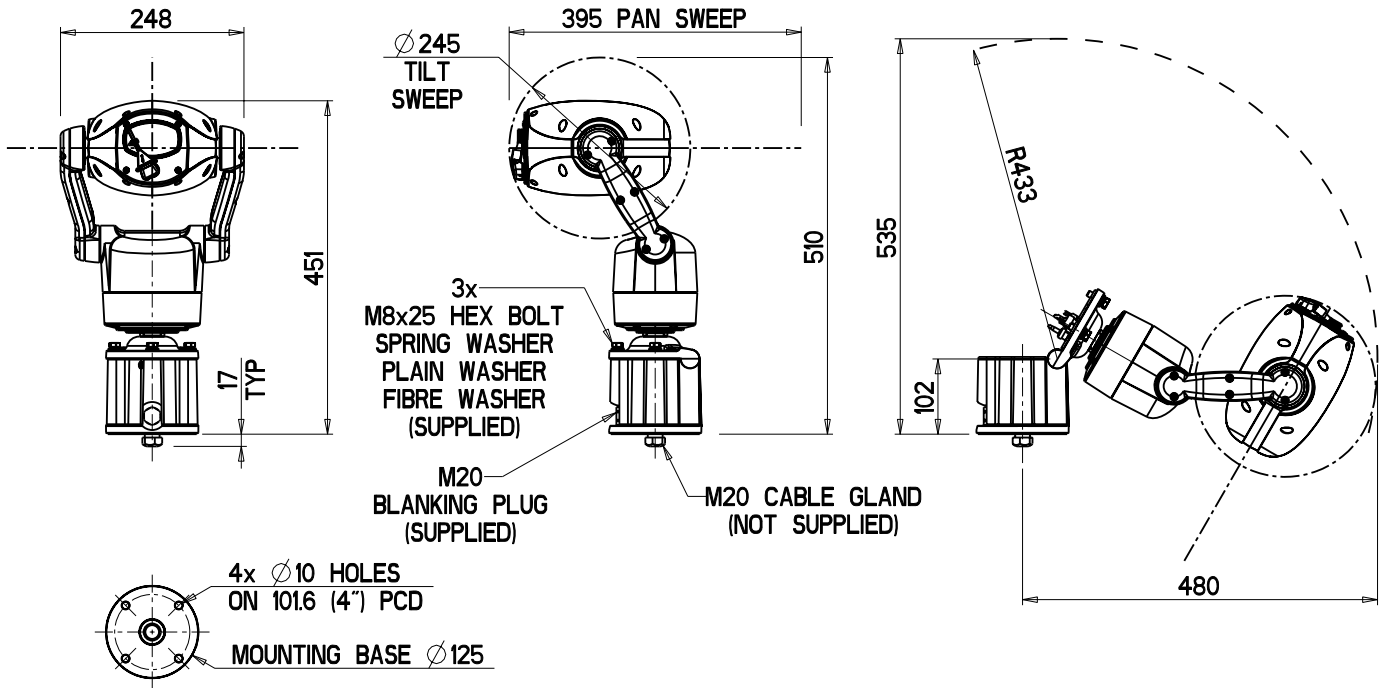
Predator with dual lamps
Weight: 8.5kg

Predator with dual lamps
Weight: 8.9kg



HMA (Hinged Mount Adapter) no lamps

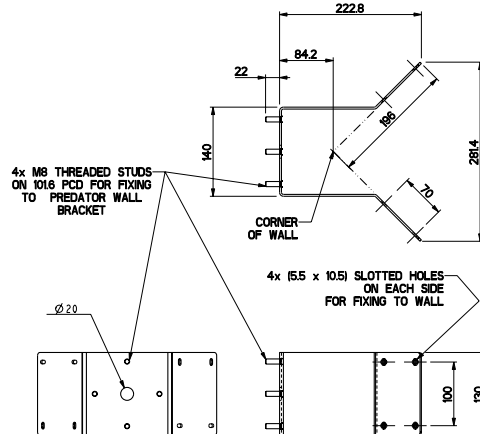
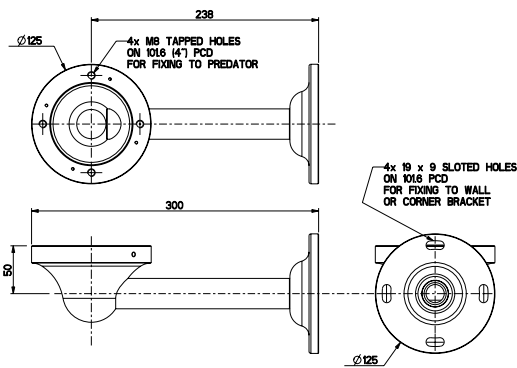
Weight: 9.5kg



PREDATOR Bracketry

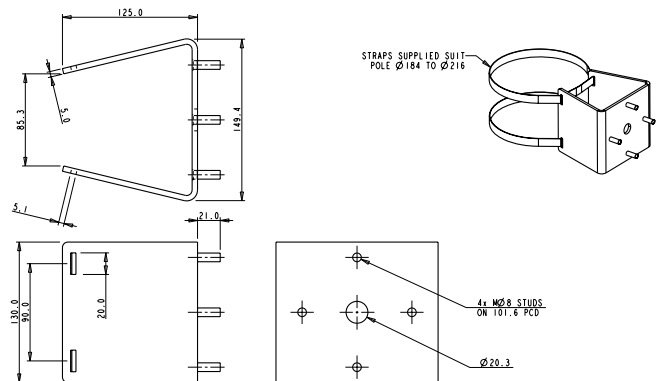
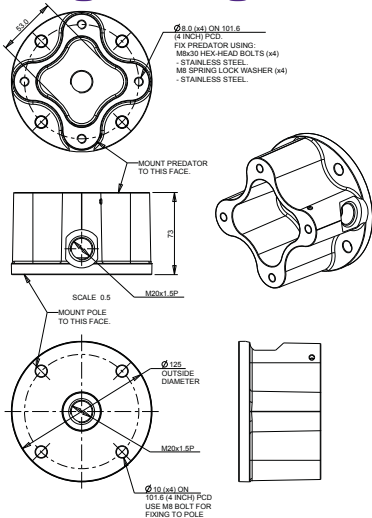
Wall Bracket
Weight: 1.2kg

Corner Bracket
Weight: 2.2kg



Pole Mount Adapter (PMA)
Weight: 1 kg

Pole Mount Bracket (PMB)
Weight: 2.5kg



PRODUCT SPECIFICATION	Sony 18x Col/Mono	Sony 28x Col/Mono	Sony 44x Col/Mono
Colour/Mono	Yes	Yes	Yes
Imager	1/4" type Super-HAD CCD II	1/4" type Super-HAD CCD II	1/4" type Super-HAD CCD II
Zoom - Optical + Digital	18x, 12x	28x, 12x	44x, 12x
Zoom - Total	216x	336x	528x
Line Resolution	670	670	670
Horizontal view angle	2.8°(T) - 48°(W)	2.1°(T) - 55.8°(W)	1.6°(T) - 68.8°(W)
Lens Size	4.1 - 73.8mm	3.5 - 98mm	3.06 - 134mm
Min Sensitivity - colour	0.4 Lux	0.4 Lux	0.6 Lux
Min Sensitivity - mono Int	0.01 Lux	0.01 Lux	0.01 Lux
Signal Noise Ratio	>50dB	>50dB	>50dB
Picture Flip	Yes	Yes	Yes

PRODUCT FEATURES ALL PREDATOR units have the following functions

Video Output	1V p to p, 75 Ω
Scanning	PAL or NTSC
Focus/Iris	Auto/Manual
Presets	360
Tours	4 (max 90 presets per tour)
Learned Patrols	4 mimic tours - up to 30 minutes duration each
Privacy Zones	Up to 24
Telemetry	Coaxial or RS485
Protocols - includes	360, Pelco P/D/Coax, BBV Coax, Ultrak RS485, Forward Vision, VCL RS485/Coax
Variable pan speed/coverage	0.1 - 120°/sec, 360° continuous rotation, absolute positioning
Variable tilt speed/coverage	0.1 - 120°/sec, 180°, absolute positioning
Auto Homing	Goes to preset, tour or mimic tour after prescribed time
Col/Mono Changeover	4 levels - 3 fixed, 1 custom/user defined
Operating temperature	-50°C to +60°C with optional heater
Power	24vac 160VA
Mounting options	Wall, Corner, Pole and Soffit
Certification	CE & FCC approval; Ingress IP68; Impact IK 10; Vibration & Shock certified approvals

SIRIUS ILLUMINATION IR & WHITE LIGHT

IR75	IR 75 metres
IR125	IR 125 metres
IR100WL	IR 100 metres, WL 100 metres
IR150SW	IR 150 metres, WL 150 metres
IR225	IR 225 metres

WEIGHTS

Predator (No lamps)	7.5kg
Predator (Single lamps)	8kg
Predator (Dual lamps)	8.5kg
Predator (HMA, No lamps)	9.5kg



HMA: Hinged Mounting Adapter

Hinged Mounting Adapter (HMA) is designed to assist in the installation of the Predator allowing access to the cable connections 'hands free'.

Installers can now install the Predator using standard cables, so no need for pre-made cables. Enabling the Predator to be positioned up to 100 metres from the power supply (dependent on Predator/ cable specification).

All trademarks are used courtesy of registered owners. PREDATOR is a registered trademark of 360 Vision Technology Ltd. The manufacturer reserves the right to change specifications without notice.



360 Vision Technology Ltd

Unit 7 Seymour Court Manor Park Runcorn Cheshire WA7 1SY UK
 Tel: +44 (0)870 903 3601 Fax: +44 (0)870 903 3602
 info@360visiontechnology.com
 www.360visiontechnology.com





360VISION
TECHNOLOGY